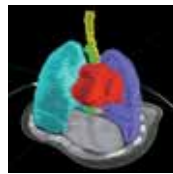


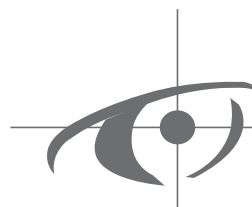


For enlightened  
decision-making.

*ARTIVIEW™*



A complete multimodality imaging,  
contouring and evaluation software  
platform for Radiotherapy.



**AQUILAB**

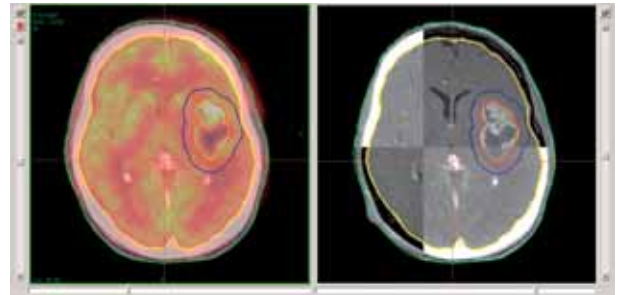
quality • imaging • systems

As an innovative, accurate, fully-featured and versatile solution, ARTIVIEW is pioneering a new generation of Radiotherapy software.

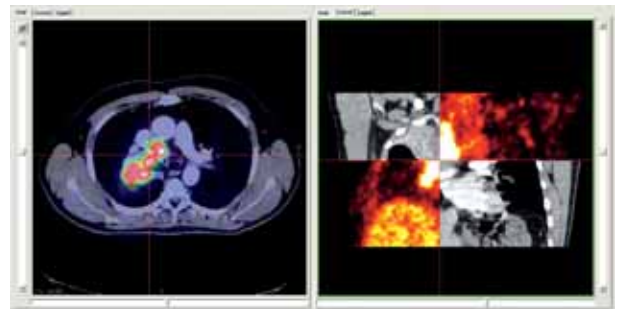
ARTIVIEW is DICOM and DICOM RT compatible with your existing equipment: when integrated into your network, it enables optimal management of patient images and technical data.

It includes all the tools required for the simulation (multimodality image fusion and contouring) and assessment of your radiotherapy treatments (images, contours and doses).

## THE MOST ACCURATE SOFTWARE PLATFORM FOR IMAGING IN RADIOTHERAPY



*Precise contouring on CT/MR/PET image fusion.*



*CT/PET Fusion.*

### ■ A single software, for all your imaging systems.

ARTIVIEW is DICOM and DICOM RT compatible with all imaging equipment and Treatment Planning Systems (TPS), so that a single software solution caters for all your contouring and image fusion needs, whatever your existing equipment.

### ■ A single software, for all your operating procedures.

Designed in close collaboration with several medical teams, ARTIVIEW is the most complete tool set available, for all imaging modalities:

- multimodality image fusion (CT, MRI, PET),
- automatic contouring of OARs,
- advanced contouring and multislice interpolation tools,
- 3D asymmetric margins with OARs avoidance,
- automatic POI positioning for laser simulation,
- patient positioning validation tools,
- ...



## A FULLY COLLABORATIVE SOLUTION, FOR OPTIMAL ORGANISATION

### ■ A single software for all your teams.

Developed around a central DICOM database, ARTVIEW enables all team members to share the same tool and work freely on the same files - even from remote sites or laptops:

- physicians,
- medical physicists,
- dosimetrists,
- technicians
- ...

Your data are handled and stored in a standard format, ensuring a perfect match with your in-house practices and easy data re-use, even if you upgrade your technical facilities.

### ■ A single software for image sharing.

ARTVIEW's network features enable you to share files over internal and external networks:

- for clinical trials,
- for expertise request,
- to work from remote sites,
- ...

## THE FIRST EVER SOLUTION FOR RADIOTHERAPY TREATMENT EVALUATION

ARTVIEW is the first software that can accurately simulate, evaluate and compare radiotherapy treatments, no matter which protocols and equipment you use.

### ■ Objectively evaluate and compare therapeutic strategies.

ARTVIEW provides scientific and objective comparisons of therapeutic strategies, according to:

- the contours used,
- the delivered doses,
- the technique and equipment employed,
- ...

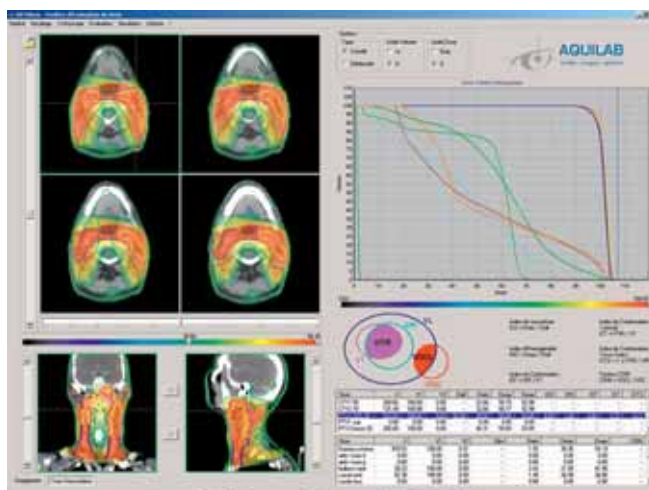
### ■ Accurately assess your treatments.

ARTVIEW accurately assesses the effects of each treatment and thus provides new perspectives for refining your therapeutic protocols:

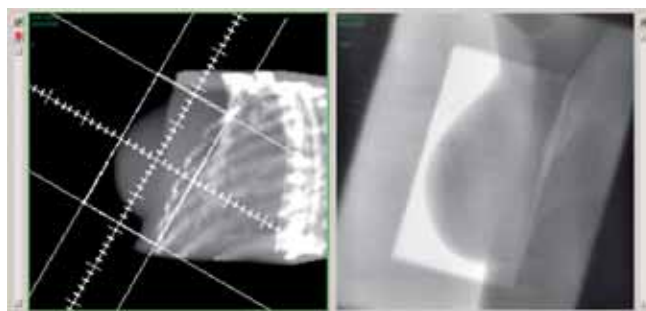
- comparison of various imaging systems (CT, Cone Beam CT, DRRs, Portals, ...),
- calculation of objective criteria for evaluating the delivered doses,
- progressive implementation of indicators linked to your clinical results,
- ...

### ■ For enlightened decision-making.

Better information means that your medical teams can refine their therapeutic decisions and objectively choose between various strategies - creating greater patient benefits.



*Dose evaluation on objective criteria.*

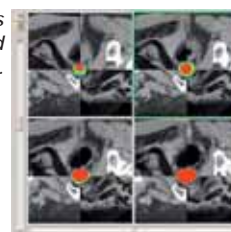


*DRR/Portal image comparison.*



*CT/Cone Beam CT comparison.*

*Contours evaluation and comparison.*





## ARTIVIEW™

**ARTIVIEW, a new generation of simulation, exchange and evaluation software for radiotherapy.**

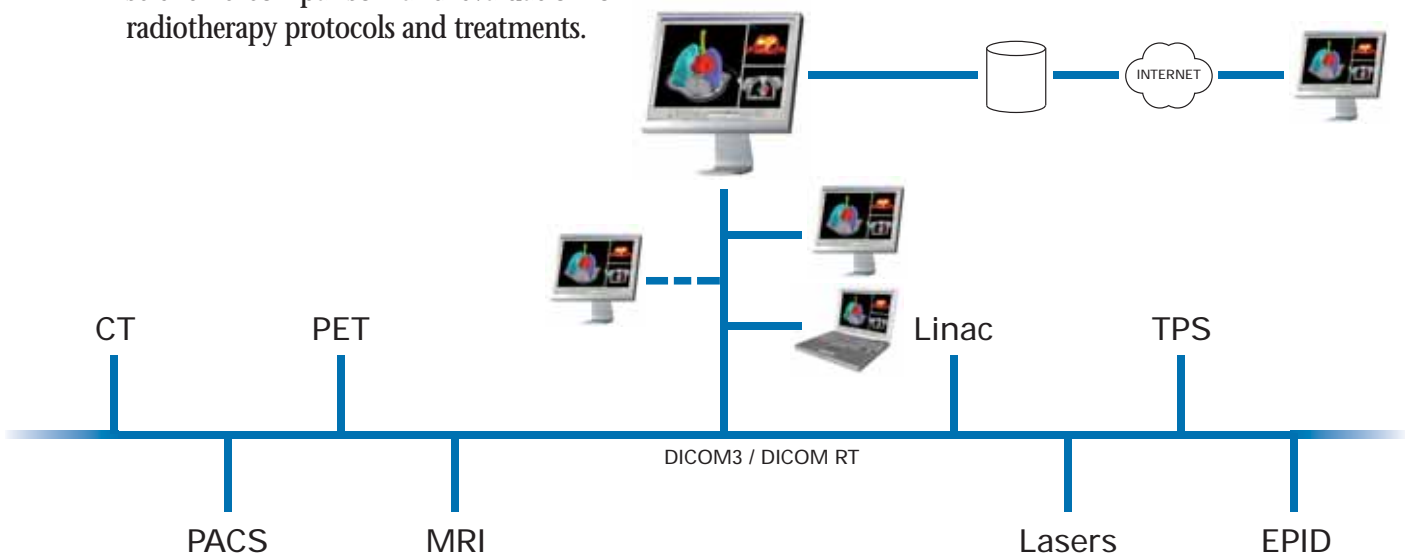
Featuring improved accuracy, greater versatility and complete independence from treatment planning systems, ARTIVIEW provides your medical teams with a single, future-proof and user-friendly tool for image fusion and contouring in all imaging modalities.

ARTIVIEW is the first software to allow scientific comparison and evaluation of radiotherapy protocols and treatments.



## AQUILAB

Founded and managed by a group of high-level scientists, AQUILAB provides healthcare centres with the software solutions needed to continuously improve the quality and precision of their medical imaging and radiotherapy systems.



*To trial ARTIVIEW or schedule an on-site demonstration, please contact:*

### AQUILAB

Parc Eurasanté - Lille Métropole - Bâtiment Hermès -  
407 rue Salvador Allende - F-59120 Loos les Lille - France

Tel.: +33 (0)3 69 61 51 51 - Fax: +33 (0)3 69 61 51 50

E-mail: [info@aquilab.com](mailto:info@aquilab.com) - <http://www.aquilab.com>

